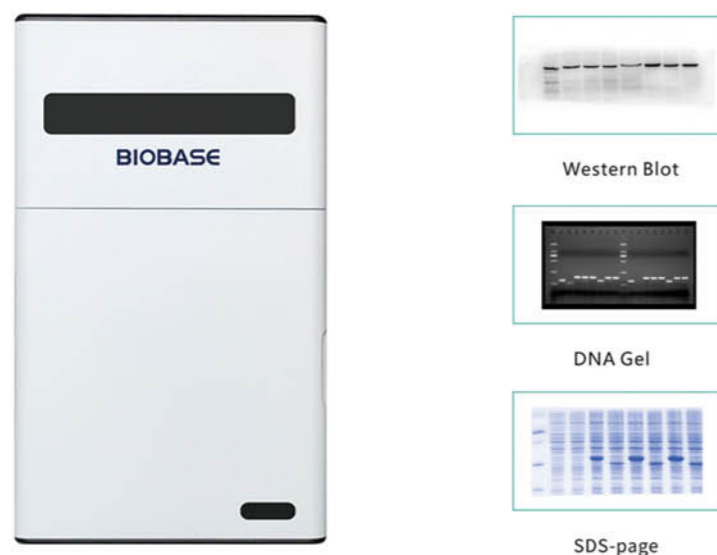


Automatic Chemiluminescence Imaging System



Applications:

Nucleic acid detection: EB, SYBRGold, SYBRGreen, SYBRSafe, GelRed, GelGreen, Fluorescein.

Protein test: Silver dyeing, SDS-page, Visible light imaging.

Luminescence detection: Western Blot, Western Lightning, ECL, ECLplus

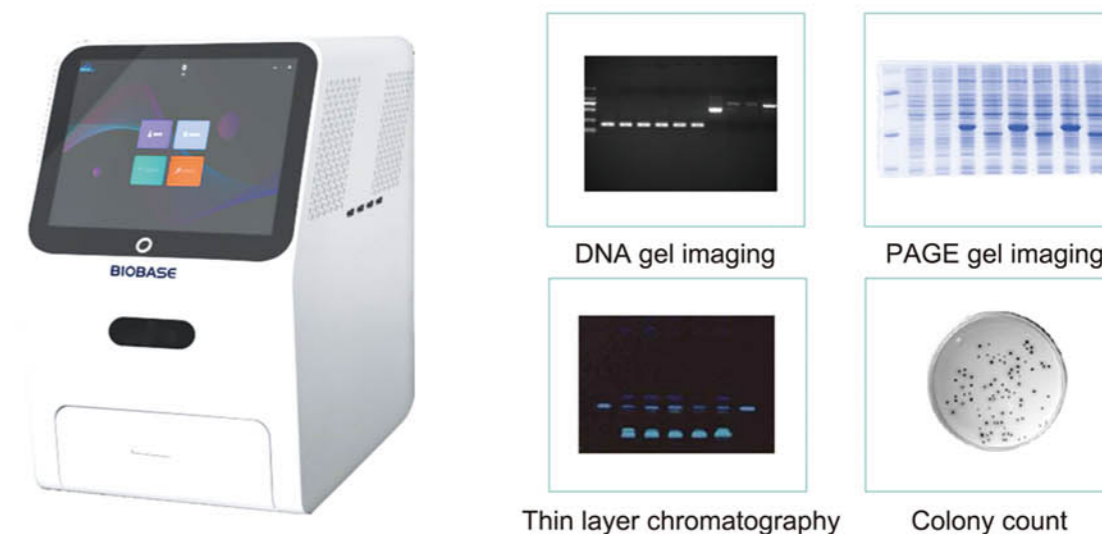
Features:

- * Fully automatic control of the lens and light source
- * Precise automatic exposure in calculate, no need to repeat calculation the exposure time
- * One button shooting, marker and chemiluminescence image automatic stacking
- * Cryogenic scientific research ultrasensitive CCD camera, wide aperture Lens

Technical Parameters:

Model	BK-ACG600	BK-ACG900
Camera Resolution	9.0MP	12.0MP
Cooling Temperature	-65°C	
Photosensitive Efficiency	> 75%	> 95%
Pixel Size	3.75*3.75um	4.63*4.63um
Exposure Time	1ms-120min	
Pixel Density	16 Bits (0-65535)	
OD	≥4.8OD	
Lens	Standard: F=0.95, 25mm; optional: F=0.8, 25mm	
UV Transmission	302nm	
White Light Reflection	LED reflection (cold light)	
Filter	Standard 590nm, other optional	
Shooting Area	16×14cm	
Timer Shut Down	1-60min	
Power Supply	100-240V 50/60Hz	
Packing Size	490*515*845mm	
Gross Weight	40kg	

Integrated Automatic Gel Imaging System



Applications:

Nucleic acid detection with various fluorescent dyes such as EB, SYBR Gold, SYBR Green, SYBR Safe, Gel red Gel, Green Texas Red, Fluorescein labeled DNA/RNA, etc.

Features:

- * Camera lens, adopt dark field camera module. Super aperture 20 million Solutions Analyticity.
- * Touch system 12.5 inches touch HD display, one touch imaging, intelligent processing system.
- * Special filter, multilayer coated filter is adopted passing of absolute stray light.
- * Standard of USB port

Technical Parameters:

Model	BK-AGX3
Camera Resolution	6.0MP
Photosensitive Efficiency	≥79%
Exposure Time	1ms-5000ms
Pixel Density	16 Bits (0-65535)
OD	≥4.8OD
Lens	Large aperture autofocus lens, 20 million auto focus lens
UV Transmission	302nm, optional other transmitted blue light
White Light Reflection	LED reflection (cold light)
White Light Transmission	White light emitting panel
Filter	Standard 590nm, other optional
Shooting Area	21×21cm
Timer Shut Down	1-60min
Touch System	12.5-inch touch system
Power Supply	110-240V, 50/60Hz
Packing Size	450*462*666mm
Gross Weight	22.3kg